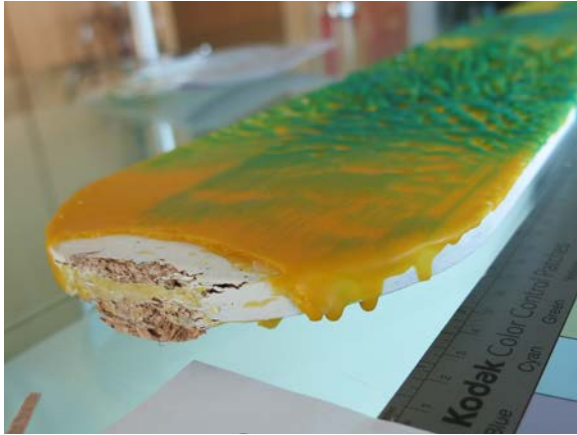


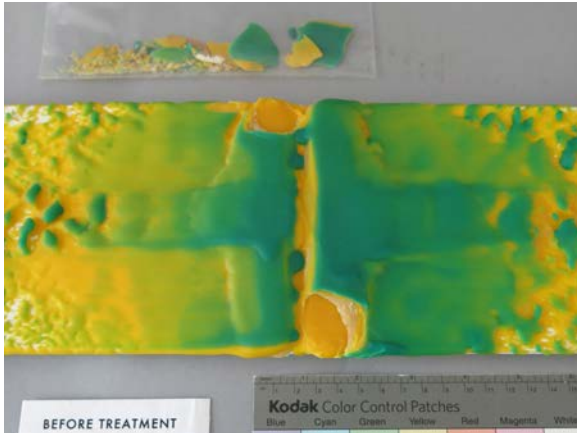
## CONTEMPORARY ART OBJECT CONSERVATION



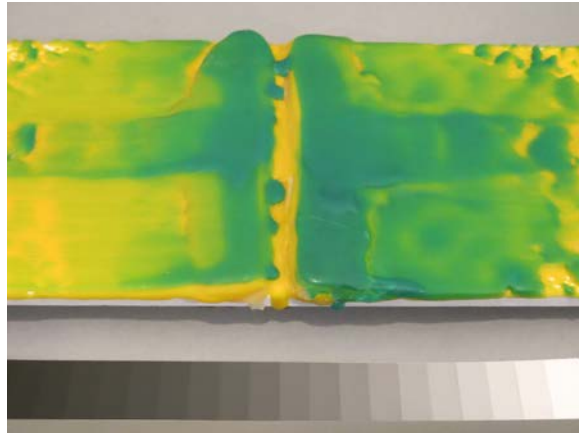
*Detail, Before Treatment*



*Detail, After Treatment*



*Detail, Before Treatment*



*Detail, After Treatment*

### Artist

Lynda Benglis

### Materials

Purified beeswax, dammar resin crystals,  
pigment on wood composite board

### Project Dates

April 2014

### Services Provided

Assessment, Hands-on Treatment  
Documentation

An accident caused by failure of mounting hardware, resulting in impact and structural damage. RLA's work to conserve the artwork involved testing to find a proper color and surface texture match for losses. Sample wax mixes were prepared and tested after using as many fragments of the original paint as possible within the repairs.